

FUSION



Civilization of Beauty



DESIGN AND PRODUCTION
OF ITALY



Lifestyle, la nuova dimensione della seduzione per giocare con i sensi attraverso le superfici.

Lifestyle: magica attrazione made in Italy.

Lifestyle, a new dimension in seduction to play with your senses through surfaces.

Lifestyle: magical attraction, made in Italy.

Lifestyle, la nouvelle dimension de la séduction pour jouer avec les sens à travers les surfaces.

Lifestyle: attraction magique made in Italy.

Lifestyle, die neue Dimension der Verführung, um durch die Oberflächen mit den Sinnen zu spielen.

Lifestyle: eine magische Attraktion made in Italy.

Lifestyle - это новое измерение соблазна, такая плитка позволяет вам играть чувствами при помощи поверхностей.

Lifestyle: волшебное притяжение из Италии.

4

FUSION



LIFESTYLE



Civilization of Beauty





GRES PORCELLANA TO A TUTTA MASSA. FULL BODY PORCELAIN TILES. GRES CERAME PLEINE MASSE. FEINSTEINZEUG VOLLE MASSE. ГОМОГЕННЫЙ КЕРАМОГРАНИТ.



GRES PORCELLANATO A TUTTA MASSA. FULL BODY PORCELAIN TILES. GRES CERAME PLEINE MASSE. FEINS



FEINZEUG VOLLE MASSE. ГОМОГЕННЫЙ КЕРАМОГРАНИТ.



BRONZE



FUSION


Conturbante Affascinante Unica
Provocative Charming Unique
Troublante Fascinante Unique
Verwirrend Reizvoll Einzigartig
Волнующая, очаровательная, уникальная

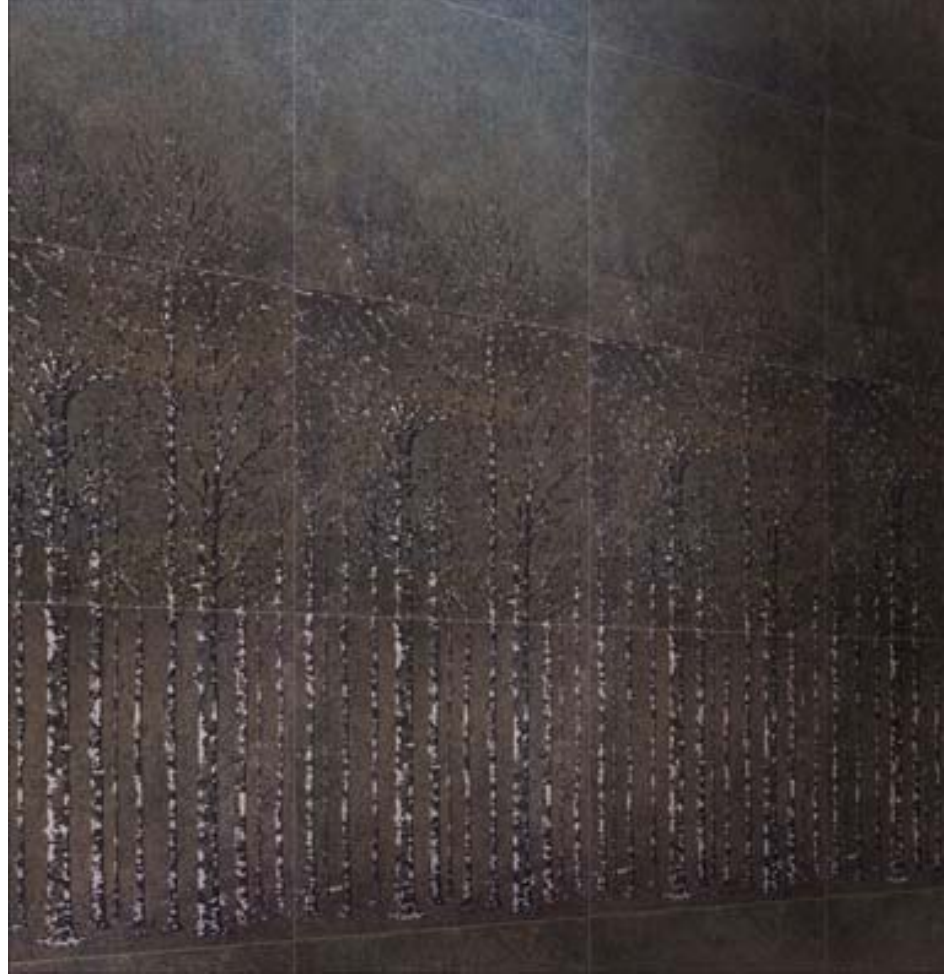


Civilization of Beauty






FUSION  **Bronze.** 49x49 lapp. strutt. rett. **Wood Platinum.** 49x49 lapp. liscia rett.






F U S I O N  Bronze. 49x49 lapp. liscia rett. Mosaico Planet Pla - Bro. 32,6x49






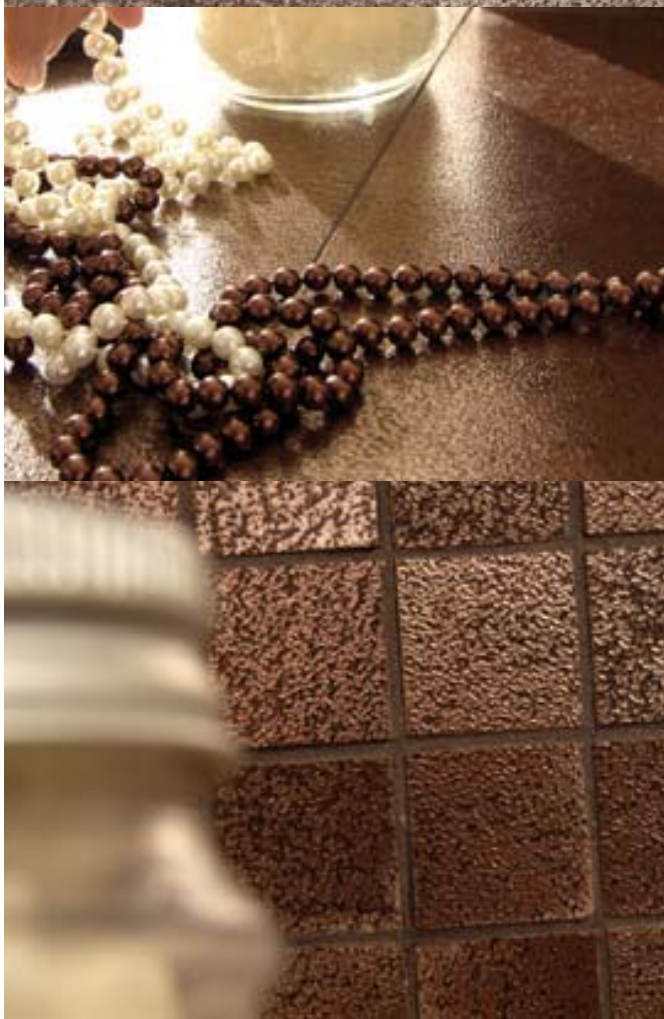


FUSION  Bronze, 49x49 nat. liscia, rett. 49x49 lapp. strutt. rett. 16,2x49 lapp. strutt. rett.





F U S I O N  Bronze. 49x49 lapp. liscia rett. Mosaico (tessere 3x3). 32,6x32,6 lapp. liscia rett.





3|16



F U S I O N ~~XX~~ Bronze. 49x49 lapp. strutt. rett. - 16,2x49 lapp. strutt. rett. **life Bronze**. 16,2x49 lapp. liscia rett.

IRIDIUM



FUSION

Sfavillante Emozionante Avvolgente
Flamboyant Enthralling Encompassing
Etincelante Emouvante Enveloppante
Glitzernd Aufregend Einhüllend
Сияющая, привлекательная, обнимающая



Civilization of Beauty




F U S I O N ~~XXX~~ Iridium. 40x40 lapp. strutt. rett. **Mosaico (tessere 5,2x5,2)**, 32,6x32,6. lapp. strutt. rett. **Mosaico Sticks**, 32,6x49. lapp. strutt. rett.









F U S I O N  Iridium. 49x49 lapp. strutt. rett. Mosaico (tessere 5,2x5,2). 32,6x32,6. lapp. strutt. rett.



PLATINUM



FUSION

Magica Scintillante Seducente
Magical Scintillating Seductive
Magique Scintillante Séduisante
Magisch Funkelnd Verführerisch
Волшебная Сверкающая
Соблазнительная



Civilization of Beauty

GRES PORCELLANATO A TUTTA MASSA. FULL BODY PORCELAIN TILES. GRES CERAME PLEINE MASSE. FEINSTEINZEUG VOLLE MASSE. ГОМОГЕННЫЙ КЕРАМОГРАНИТ



25

FUSION  **Platinum.** 49x49 lapp. strutt. rett. **Mureto.** 16,2x49 lapp. strutt. rett.









FUSION  Platinum. 49x49 nat. liscia. rett.




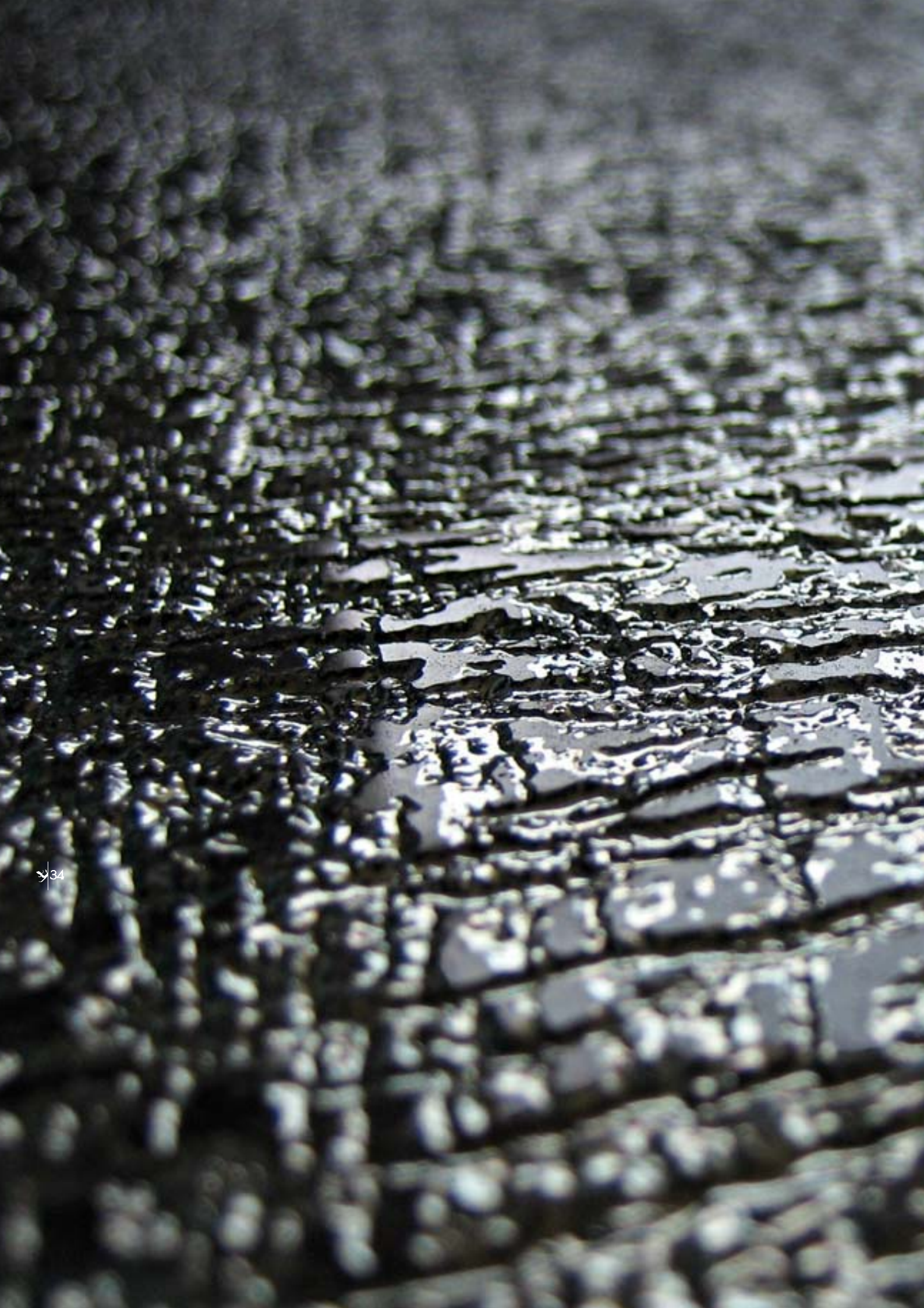


F U S I O N  Platinum. Mosaico (tessere 3x3). 32,6x32,6 lapp. liscia rett. Mosaico Sticks. 32,6x49 lapp. liscia rett.






F U S I O N  **Platinum.** 49x49 lapp. liscia rett. 24,5x49 lapp. liscia rett. 16,2x49 lapp. liscia rett. **Daisy.** 49x49 lapp. liscia rett. **Class A-B.** 2x49





FUSION  Platinum. lapp. strutt. rett.

GRES PORCELLANATO A TUTTA MASSA. FULL BODY PORCELAIN TILES. GRES CERAME PLEINE MASSE. FEINSTEINZEUG VOLLE MASSE. ГОМОГЕННЫЙ КЕРАМОГРАНИТ.



DESIGN AND PRODUCTION OF ITALY

FUSION



LIFESTYLE

35 



Civilization of Beauty

FUSION

LIFESTYLE

12mm.
Spessore.
Thickness.
Épaisseur.
Stärke.
Толщина 12 мм.

GRES PORCELLANATO A TUTTA MASSA.
FULL BODY PORCELAIN TILES.
GRÈS CÉRAME PLEINE MASSE.
FEINSTEINZEUG VOLLE MASSE.
ГОМОГЕННЫЙ КЕРАМОГРАНИТ.



IRIDIUM



B230 5L04 Iridium
49x49 . 19 15/16" x 19 15/16" lap. strutt. rett. ●



B250 WL04 Iridium
24,5x49 . 9 1/2" x 19 15/16" lap. strutt. rett. ●



B255 WL74 Iridium
16,2x49 . 6 3/8" x 19 15/16" lap. strutt. rett. ●

BRONZE



B210 5708 Bronze
49x49 . 19 15/16" x 19 15/16" nat. liscia rett. ▲

B230 5L02 Bronze
49x49 . 19 15/16" x 19 15/16" lap. liscia rett. ●



B240 WL08 Bronze
24,5x49 . 9 1/2" x 19 15/16" nat. liscia rett. ▲

B250 WL02 Bronze
24,5x49 . 9 1/2" x 19 15/16" lap. liscia rett. ●



B250 WL78 Bronze
16,2x49 . 6 3/8" x 19 15/16" nat. liscia rett. ▲

B255 WL72 Bronze
16,2x49 . 6 3/8" x 19 15/16" lap. liscia rett. ●



..... SUPERFICIE LAPPATA STRUTTURATA

..... SUPERFICIE LAPPATA LISCIA



| EUROPALLET 80x120 cm | | | | | | | |
|----------------------|-----------------------------|---------------------------|----------------------------|------------------------------|---------------------------|----------------------------|------------|
| FORMATO cm. Size | PZ. X SCAT. Pieces x Box | MQ. X SCAT. Sqrm x Box | KG X SCAT. Weight x Box | SCAT. X PAL. Boxes x Pal. | MQ. X PAL. Sqrm x Pal. | KG X PAL. Weight x Pal. | Cm. h PAL. |
| 49x49 | 4 | 0.96 | 24 | 26 | 24.96 | 644 | 64 |
| 24.5x49 | 8 | 0.96 | 24 | 42 | 40.32 | 1030 | 89 |
| 16.2x49 | 10 | 0.80 | 20 | 48 | 38.4 | 980 | 85 |

BRONZE



B230 5L06 Bronze
49x49 . 19 15/16" x 19 15/16" lap. strutt. rett. ●



B250 WL06 Bronze
24.5x49 . 9 1/2" x 19 15/16" lap. strutt. rett. ●



B255 WL76 Bronze
16.2x49 . 6 3/8" x 19 15/16" lap. strutt. rett. ●

PLATINUM



B210 5L01 Platinum
49x49 . 19 15/16" x 19 15/16" nat. liscia rett. ▲
B230 5L01 Platinum
49x49 . 19 15/16" x 19 15/16" lap. liscia rett. ●

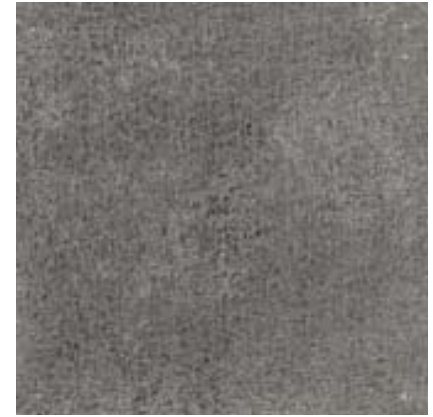


B240 WL01 Platinum
24.5x49 . 9 1/2" x 19 15/16" nat. liscia rett. ▲
B250 WL01 Platinum
24.5x49 . 9 1/2" x 19 15/16" lap. liscia rett. ●



B250 WL71 Platinum
16.2x49 . 6 3/8" x 19 15/16" nat. liscia rett. ▲
B255 WL71 Platinum
16.2x49 . 6 3/8" x 19 15/16" lap. liscia rett. ●

PLATINUM



B230 5L05 Platinum
49x49 . 19 15/16" x 19 15/16" lap. strutt. rett. ●



B250 WL05 Platinum
24.5x49 . 9 1/2" x 19 15/16" lap. strutt. rett. ●



B255 WL75 Platinum
16.2x49 . 6 3/8" x 19 15/16" lap. strutt. rett. ●

GRES PORCELLANATO A TUTTA MASSA. FULL BODY PORCELAIN TILES. GRES CERAME PLEINE MASSE. FEINSTEINZEUG VOLLE MASSE. ГОМОГЕННЫЙ КЕРАМОГРАНИТ.

▲ NATURALE E RETTIFICATO, NATURAL AND RECTIFIED, NATUREL ET RECTIFIE, NATUR OBERFLÄCHE UND KALIBRIERT. НАТУРАЛЬНЫЙ И РЕКТИФИЦИРОВАННЫЙ.
● LAPPATO E RETTIFICATO, HONED AND RECTIFIED, SEMI-POLI ET RECTIFIE, TEILPOLIERT UND KALIBRIERT. ПОЛИРОВАННЫЙ И РЕКТИФИЦИРОВАННЫЙ.

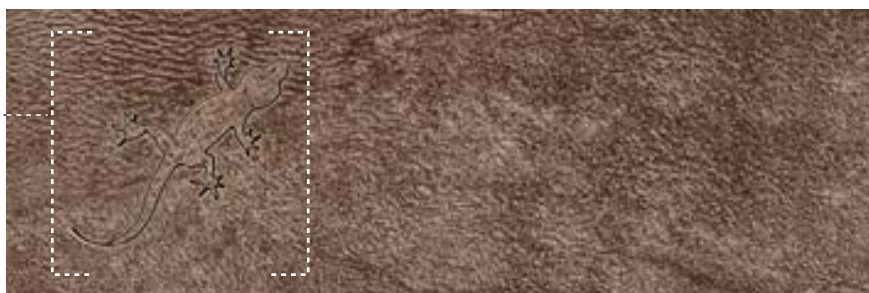
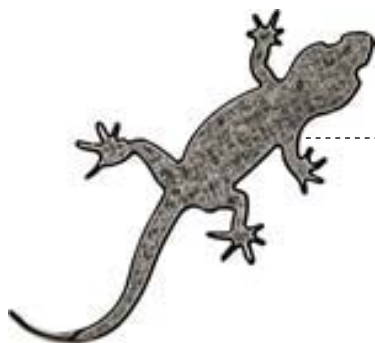
FUSION

L I F E S T Y L E

L I F E

DECORI

DECORATIONS, DÉCORS, DEKORE, Декоры.



R190 L434 Life Bronze
16,2x49 6 3/8"x19 15/16" lap. liscia rett. ● set 6 pz.

38

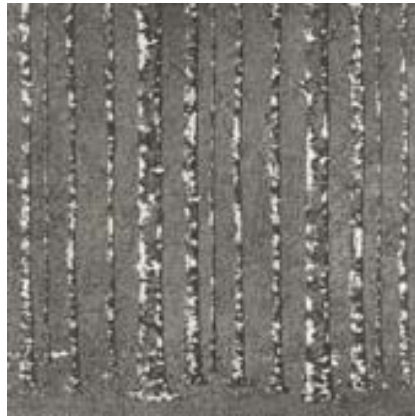
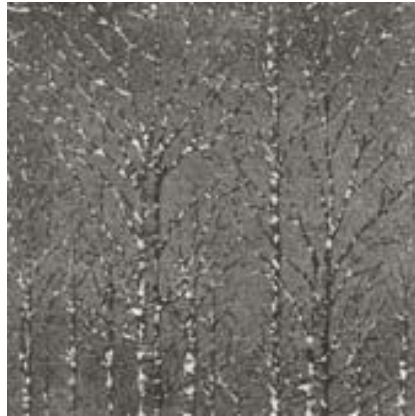
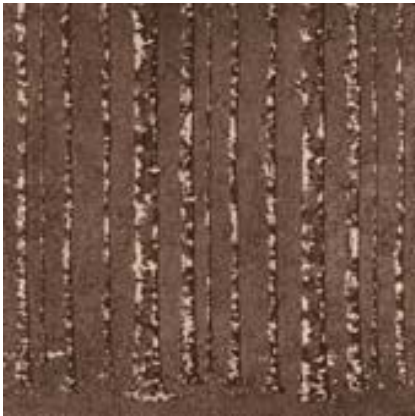
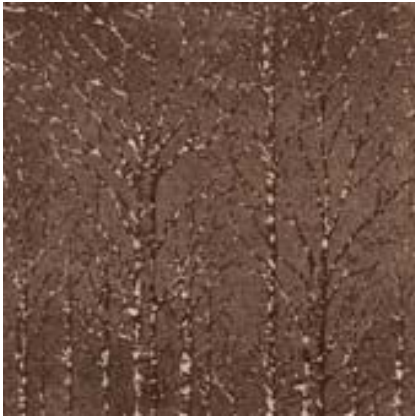


R190 L433 Life Platinum
16,2x49 6 3/8"x19 15/16" lap. liscia rett. ● set 6 pz.



| EUROPALLET 80x120 cm | | | | | | | |
|----------------------|-----------------------------|---------------------------|----------------------------|------------------------------|---------------------------|----------------------------|------------|
| FORMATO cm. Size | PZ. X SCAT. Pieces x Box | MQ. X SCAT. Sqrm x Box | KG X SCAT. Weight x Box | SCAT. X PAL. Boxes x Pal. | MQ. X PAL. Sqrm x Pal. | KG X PAL. Weight x Pal. | Cm. h PAL. |
| Glass 2x49 | 10 | - | 2,5 | - | - | - | - |
| Wood 49x49 | 3 | 0,72 | 18 | - | - | - | - |
| Life 16,2x49 | 6 | 0,48 | 12 | - | - | - | - |

WOOD



R200 L428 Wood Bronze
49x49 . 19 15/16" x 19 15/16" lap. liscia rett. ● set 3 pz.

R200 L427 Wood Platinum
49x49 . 19 15/16" x 19 15/16" lap. liscia rett. ● set 3 pz.

GLASS

V240 L423 Glass A
2x49 . 13/16" x 19 15/16"

V240 L424 Glass B
2x49 . 13/16" x 19 15/16"



FUSION LIFESTYLE

DECORI

DECORATIONS. DÉCORS. DEKORE. Декоры.

NIGHT DAISY




V360 L430 Night Daisy Bronze
49x49 . 19 15/16"x19 15/16" lap. liscia rett. ● 



V360 L429 Night Daisy Platinum
49x49 . 19 15/16"x19 15/16" lap. liscia rett. ● 

DAISY



V390 L432 Daisy Bronze
49x49 . 19 15/16"x19 15/16" lap. liscia rett. ● 



V390 L431 Daisy Platinum
49x49 . 19 15/16"x19 15/16" lap. liscia rett. ● 


PLANET



V450 L426 Mosaico Planet Pla/Bro
32,6x49 . 12 7/8"x19 15/16" lap. liscia rett. ● 

STICKS



V340 9160 Mosaico Sticks Bronze
32,6x49 . 12 7/8"x19 15/16" lap. liscia rett. ● 



V340 9159 Mosaico Sticks Platinum
32,6x49 . 12 7/8"x19 15/16" lap. liscia rett. ● 

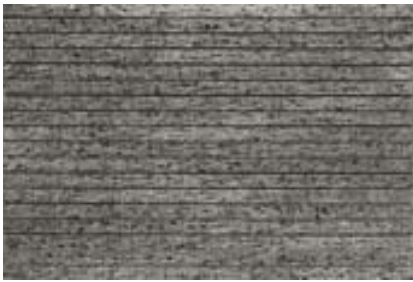


| | | EUROPALLET 80x120 cm | | | | | |
|---------------------|-----------------------------|--------------------------|----------------------------|------------------------------|--------------------------|----------------------------|------------|
| FORMATO cm. Size | PZ. X SCAT. Pieces x Box | MQ. X SCAT. Sqm x Box | KG X SCAT. Weight x Box | SCAT. X PAL. Boxes x Pal. | MQ. X PAL. Sqm x Pal. | KG X PAL. Weight x Pal. | Cm. h PAL. |
| Night Daisy 49x49 | 1 | 0,24 | 6 | - | - | - | - |
| Daisy 49x49 | 1 | 0,24 | 6 | - | - | - | - |
| Sticks 32,6x49 | 4 | 0,64 | 15,4 | 40 | 25,6 | 616 | 72 |
| Planet 32,6x49 | 4 | 0,64 | 14 | 40 | 25,6 | 560 | 72 |
| Mosaico 3x3 | 4 | 0,43 | 10,5 | 72 | 30,96 | 756 | 73 |

MOSAICO (TESSERE 3X3)



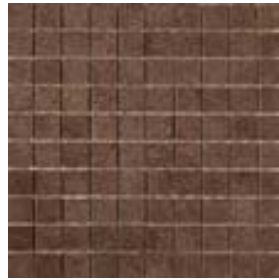
V340 9163 Mosaico Sticks Bronze
32,6x49 . 12 7/8"x19 15/16" lap. strutt. rett. ●



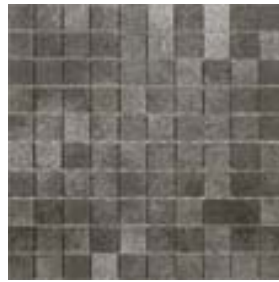
V340 9162 Mosaico Sticks Platinum
32,6x49 . 12 7/8"x19 15/16" lap. strutt. rett. ●



V340 9161 Mosaico Sticks Iridium
32,6x49 . 12 7/8"x19 15/16" lap. strutt. rett. ●



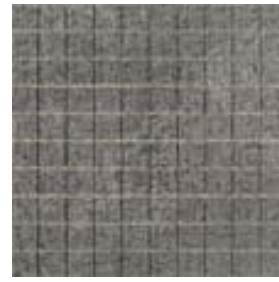
B500 9155 Mosaico Bronze
32,6x32,6 . 12 7/8"x12 7/8" lap. liscia rett. ●



B500 9154 Mosaico Platinum
32,6x32,6 . 12 7/8"x12 7/8" lap. liscia rett. ●



B500 9158 Mosaico Bronze
32,6x32,6 . 12 7/8"x12 7/8" lap. strutt. rett. ●



B500 9157 Mosaico Platinum
32,6x32,6 . 12 7/8"x12 7/8" lap. strutt. rett. ●



B500 9156 Mosaico Iridium
32,6x32,6 . 12 7/8"x12 7/8" lap. strutt. rett. ●



GRES PORCELLANATO A TUTTA MASSA. FULL BODY PORCELAIN TILES. GRES CERAME PLEINE MASSE. FEINSTEINZEUG VOLLE MASSE. ГОМОГЕННЫЙ КЕРАМОГРАНИТ.

▲ NATURALE E RETTIFICATO, NATURAL AND RECTIFIED, NATUREL ET RECTIFIE, NATUR OBERFLÄCHE UND KALIBRIERT. НАТУРАЛЬНЫЙ И РЕКТИФИЦИРОВАННЫЙ.
● LAPPATO E RETTIFICATO, HONED AND RECTIFIED, SEMI-POLI ET RECTIFIE, TEILPOLIERT UND KALIBRIERT. ПОЛИРОВАННЫЙ И РЕКТИФИЦИРОВАННЫЙ.

FUSION

LIFESTYLE

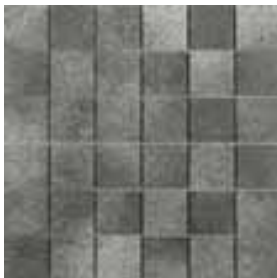
MOSAICO
(TESSERE 5,2x5,2)



B300 9211 Mosaico Bronze
32,6x32,6 . 12 7/8" x 12 7/8" lap. liscia rett. ●



B300 9214 Mosaico Bronze
32,6x32,6 . 12 7/8" x 12 7/8" lap. strutt. rett. ●



B300 9210 Mosaico Platinum
32,6x32,6 . 12 7/8" x 12 7/8" lap. liscia rett. ●



B300 9213 Mosaico Platinum
32,6x32,6 . 12 7/8" x 12 7/8" lap. strutt. rett. ●



B300 9212 Mosaico Iridium
32,6x32,6 . 12 7/8" x 12 7/8" lap. strutt. rett. ●

DECORI

DECORATIONS, DÉCORS, DEKORE. Декоры.

MURETTO



B300 L452 Muretto su Rete Bronze
16,2x49 . 6 3/8" x 19 15/16" lap. liscia rett. ●



B300 L451 Muretto su Rete Platinum
16,2x49 . 6 3/8" x 19 15/16" lap. liscia rett. ●

PEZZI SPECIALI

TRIMS, PIÈCES SPÉCIALES, SONDERTEILE. Дополнительные элементы.



BATTISCOPA

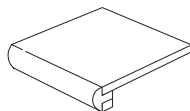
V134 BL33 PLATINUM
8x49 . 3 3/8" x 19 15/16" lap. liscia ●

V134 BL34 BRONZE
8x49 . 3 3/8" x 19 15/16" lap. liscia ●

V134 BL35 IRIDIUM
8x49 . 3 3/8" x 19 15/16" lap. strutt. ●

V134 BL36 PLATINUM
8x49 . 3 3/8" x 19 15/16" lap. strutt. ●

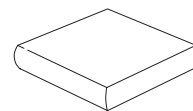
V134 BL37 BRONZE
8x49 . 3 3/8" x 19 15/16" lap. strutt. ●



GRADONE TORO

V335 KL33 PLATINUM
49x49 . 19 15/16" x 19 15/16" sup. liscia

V335 KL34 BRONZE
49x49 . 19 15/16" x 19 15/16" sup. liscia



ANGOLARE GRADONE TORO

V390 JL33 PLATINUM
49x49 . 19 15/16" x 19 15/16" sup. liscia

V390 JL34 BRONZE
49x49 . 19 15/16" x 19 15/16" sup. liscia



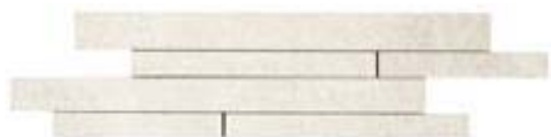
| EUROPALLET 80x120 cm | | | | | | | |
|----------------------|-----------------------------|--------------------------|----------------------------|------------------------------|--------------------------|----------------------------|------------|
| FORMATO cm. Size | PZ. X SCAT. Pieces x Box | MQ. X SCAT. Sqm x Box | KG X SCAT. Weight x Box | SCAT. X PAL. Boxes x Pal. | MQ. X PAL. Sqm x Pal. | KG X PAL. Weight x Pal. | Cm. h PAL. |
| Mosaico 5,2x5,2 | 5 | 0,53 | 12,7 | 60 | 31,8 | 762 | 75 |
| Muretto 16,2x49 | 5 | 0,40 | 10 | 70 | 28 | 700 | 80 |
| Battiscopa 8x49 | 21 | 0,82 | 19,7 | 48 | 39,36 | 945 | 87 |
| Gradone Toro 49x49 | 2 | - | 13 | - | - | - | - |
| Angolare Toro 49x49 | 2 | - | 14 | - | - | - | - |



B300 L455 Muretto su Rete Bronze
16,2x49 . 6 3/8"x19 15/16" lap. strutt. rett. ●



B300 L454 Muretto su Rete Platinum
16,2x49 . 6 3/8"x19 15/16" lap. strutt. rett. ●



B300 L453 Muretto su Rete Iridium
16,2x49 . 6 3/8"x19 15/16" lap. strutt. rett. ●

IMBALLI

PACKAGE . EMBALLAGE . VERPACKUNG . Упаковка

| EUROPALLET 80x120 cm | | | | | | | |
|----------------------|-----------------------------|--------------------------|----------------------------|------------------------------|--------------------------|----------------------------|------------|
| FORMATO cm. Size | PZ. X SCAT. Pieces x Box | MQ. X SCAT. Sqm x Box | KG X SCAT. Weight x Box | SCAT. X PAL. Boxes x Pal. | MQ. X PAL. Sqm x Pal. | KG X PAL. Weight x Pal. | Cm. h PAL. |
| 49x49 | 4 | 0,96 | 24 | 26 | 24,96 | 644 | 64 |
| 24,5x49 | 8 | 0,96 | 24 | 42 | 40,32 | 1030 | 89 |
| 16,2x49 | 10 | 0,80 | 20 | 48 | 38,4 | 980 | 85 |
| Glass 2x49 | 10 | - | 2,5 | - | - | - | - |
| Wood 49x49 | 3 | 0,72 | 18 | - | - | - | - |
| Life 16,2x49 | 6 | 0,48 | 12 | - | - | - | - |
| Night Daisy 49x49 | 1 | 0,24 | 6 | - | - | - | - |
| Daisy 49x49 | 1 | 0,24 | 6 | - | - | - | - |
| Sticks 32,6x49 | 4 | 0,64 | 15,4 | 40 | 25,6 | 616 | 72 |
| Planet 32,6x49 | 4 | 0,64 | 14 | 40 | 25,6 | 560 | 72 |
| Mosaico 3x3 | 4 | 0,43 | 10,5 | 72 | 30,96 | 756 | 73 |
| Mosaico 5,2x5,2 | 5 | 0,53 | 12,7 | 60 | 31,8 | 762 | 75 |
| Muretto 16,2x49 | 5 | 0,40 | 10 | 70 | 28 | 700 | 80 |
| Battiscopa 8x49 | 21 | 0,82 | 19,7 | 48 | 39,36 | 945 | 87 |
| Gradone Toro 49x49 | 2 | - | 13 | - | - | - | - |
| Angolare Toro 49x49 | 2 | - | 14 | - | - | - | - |

RESISTENZA CHIMICA UNI EN ISO 10545 - 13 § 8 (2000)
 CHEMICAL RESISTANT UNI EN ISO 10545 - 13 § 8 (2000)
 RESISTANCE CHIMIQUE UNI EN ISO 10545 - 13 § 8 (2000)
 CHEMISCHE WIDERSTANDSFÄHIGKEIT UNI EN ISO 10545 - 13 § 8 (2000)
 СТОЙКОСТЬ К ХИМИЧЕСКИМ ВЕЩЕСТВАМ UNI EN ISO 10545 - 13 § 8 (2000)

RESISTENZA ALLE MACCHIE UNI EN ISO 10545 - 14 (2000)
 STAIN RESISTANT UNI EN ISO 10545 - 14 (2000)
 RESISTANCE AUX TACHES UNI EN ISO 10545 - 14 (2000)
 FLECKBESTÄNDIGKEIT UNI EN ISO 10545 - 14 (2000)
 СТОЙКОСТЬ К ОБРАЗОВАНИЮ ПЯТЕН UNI EN ISO 10545 - 14 (2000)



344



PROPRIETÀ ANTISDRUCCIOLO DIN 51130 (06/2004)

NON-SLIP PROPERTIES DIN 51130 (06/2004)
 PROPRIETES ANTIGLISSE DIN 51130 (06/2004)
 RUTSCHFESTE EIGENSCHAFTEN DIN 51130 (06/2004)
 ХАРАКТЕРИСТИКИ НЕСКОЛЬЗКОСТИ DIN 51130 (06/2004)

Sulla superficie strutturata disponibile a richiesta finitura R11.
 For the textured surface, R11 finish available on request.
 Pour la surface structurée, la finition R11 disponible sur demande.
 Für die strukturierte Oberfläche ist die R11 Ausführung auf Anfrage erhältlich.
 На структурной поверхности по заказу выполняется отделка R11.



DECORI

DECORATIONS.
 DÉCORS.
 DEKORE.
 Декоры.

I decori sabbiati sono protetti da un trattamento specifico basato sulle nanotecnologie.
 Tale trattamento rende la piastrella decorata resistente alle macchie secondo la normativa UNI EN ISO 10545-14.

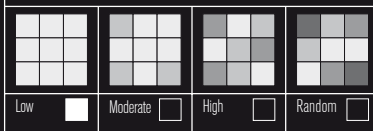
The sanded decors are protected by means of a specific treatment based on nanotechnology.
 Said treatment makes the decorated tile stain resistant according to UNI EN ISO 10545-14.

Les décors sablés sont protégés par un traitement spécifique basé sur la nanotechnologie.
 Grâce à ce traitement certifié par le laboratoire SASSUOLOLAB (Rapp. Essais n° 1089/2006), les carreaux décorés sont résistants aux taches conformément à la norme UNI EN ISO 10545-14.

Die sandgestrahlten Dekore sind durch eine spezifische Behandlung basierend auf der Nanotechnologie geschützt.
 Diese Behandlung macht die dekorierte Fliese gemäß der UNI EN ISO 10545-14.

Созданные при помощи пескоструйной обработки декоры защищены специальной обработкой, основывающейся на нанотехнологиях.
 Такая обработка делает плитку с декором стойкой к образованию пятен в соответствии со стандартом UNI EN ISO 10545-14.

SHADE SPECTRUM



CARATTERISTICHE TECNICHE

Technical Features . Caracteristiques Techniques . Technische Eigenschaften . Технические характеристики

12mm. Spessore. Thickness. Épaisseur. Dicke. Толщина 12 мм.

GRES PORCELLANATO A TUTTA MASSA. FULL BODY PORCELAIN TILES. GRÈS CÉRAME PLEINE MASSE. FEINSTEINZEUG VOLLE MASSE. ГОМОГЕННЫЙ КЕРАМОГРАНИТ.

| TIPO DI PROVA TEST ESSAI KRITERIEN | | NORMATIVA ACCORDING TO NORME NORM | VALORE PRESCRITTO DALLE NORME REQUIRED STANDARDS - NORMVORGABE VALEUR PRESCRITE PAR LES NORMES | FUSION LIFESTYLE |
|---|--|--|---|---|
| Dimensioni Sizes Dimension Abmessungen | | EN 98 | Lunghezza e larghezza $\pm 0.6\%$ max Length and width - Longueur et Largeur - Länge und Breite Spessore $\pm 5\%$ max Thickness - Épaisseur - Stärke Rettilineità spigoli $\pm 0.5\%$ max Linearity - Rectitude des arêtes - Kantengeradheit Ortogonalità $\pm 0.6\%$ max Wedging - Orthogonalité - Rechtwinkligkeit Planarità $\pm 0.5\%$ max Warpage - Planéité - Ebenflächigkeit | Conforme According Conforme Gemaass |
| Assorbimento d'acqua Water absorption Absorption d'eau Wasseraufnahme | | EN 99 | 0,5% | $\leq 0,02\%$ |
| Resistenza alla flessione Breaking modulus Resistance a la flexion Biegefestigkeit | | EN 100 | 27 N/mm ² | 60 N/mm ² |
| Resistenza allo scivolamento Slippery Grade Valeur Antiderapant Trittsicherheit | | DIN 51130 | R9 \leq R13 | R9 |
| Resistenza all'abrasione profonda Deep abrasion resistance Resistance à l'abrasion profonde Tiefen-Abriebbeständigkeit | | EN 102 | 205mm ³ | 117 mm ³ |
| Coefficiente di dilatazione termica lineare Thermal expansion coefficient Coefficient de dilatation thermique lineaire Warmeausdehnungskoeffizient | | EN 103 | 9 MK-1 | 6,5 |
| Resistenza agli sbalzi termici Thermal shock resistance Resistance aux écarts de temperature Temperaturwechselfestigkeit | | EN 104 | Nessun campione deve presentare difetti visibili No sample must show visible defects Aucun échantillon ne doit présenter des défauts visibles Kein Muster soll sichtbare Schäden aufweisen | Resistenti Resistant Résistants Widerstandsfähig |
| Resistenza al Cavillo Crazing resistance Resistance au tressillage Haarissbeständigkeit | | EN 105 | Non è accettato alcun difetto di fessurazione in alcun campione Aucun échantillon ne doit présenter des défauts de tressillage. No cracks or fissures accepted on any sample. Es werden auf keinem Muster Rissmängel akzeptiert. | Resistenti Resistant Résistants Widerstandsfähig |
| Resistenza all'attacco acido e basico Glaze resistance to acid and alkali attack Resistance aux acides et aux bases Saure und laugensbeständigkeit | | EN 106 | Nessun campione deve presentare rotture o alterazioni visibili all'attacco chimico No sample must show visibles signs to surface Aucun échantillon ne doit présenter d'altérations visibles d'attaque chimique Kein Muster soll keine sichtbaren Spuren infolge chemischer Einwirkung zeigen | AA |
| Resistenza al gelo Frost resistance Resistance au gel Frostbeständigkeit | | EN 202 | Nessun campione deve presentare rotture o alterazioni apprezzabili della superficie No sample must show alterations to surface Aucun échantillon ne doit présenter de ruptures ou d'altérations considérable de la surface Kein Muster soll weder Bruch noch Schäden an der Oberfläche aufweisen | Non gelivi Frost proof Non gelifis Frostsicher |

Ceramic Tiles of Italy

La lappatura, nella versione strutturata, evidenzia volutamente i colori naturali del supporto.
In the textured version, the lapping treatment intentionally highlights the tile body's natural colours.
Le polissage, dans la version structurée, met en évidence les colories naturels du support en céramique.
In der strukturierten Version bringt das Läppen die natürlichen Farben des Scherbens zur Geltung.
В структурированном варианте притирка намеренно подчеркивает натуральные цвета основы.

Coordinamento
Ufficio Marketing La Fabbrica

Progetto
Omniadvert

Stampa
Intese Grafiche

Foto
Area dinamica

2007



Civilization of Beauty



Civilization of Beauty

La Fabbrica S.p.A
Via Emilia Ponente, 925
48014 Castel Bolognese (RA) Italy
Tel. +39 0546 - 659911
Fax +39 0546 - 656223
Sito Internet: <http://www.lafabbrica.it>
E-mail: info@lafabbrica.it